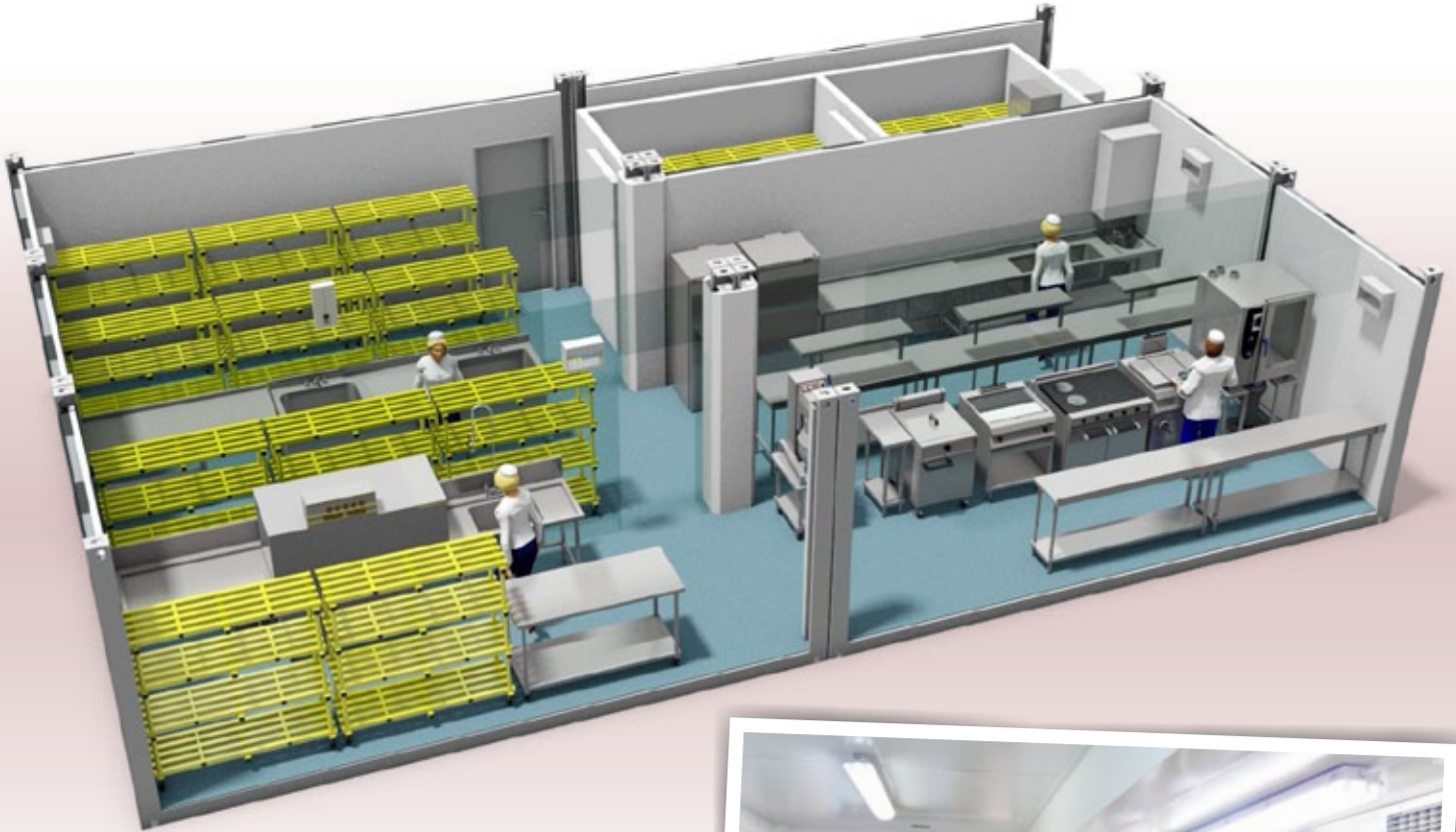


# TW600 ISO Kitchen



- MK provides modular kitchen and dining facilities for remote site applications.
- We have an impressive track record of delivering fast-track facilities for military, humanitarian, mining and construction projects worldwide.
- We provide kitchen and dining facilities designed to feed from 100 to 10,000 meals per day.

**www.mk-hire.co.uk Office: +44 (0)845 812 0800 Mobile: +44 (0)7860 333458**  
**Email: [mark.kingston@mobilekitchensltd.co.uk](mailto:mark.kingston@mobilekitchensltd.co.uk)**



## EXPERIENCE AND EXPERTISE

- **British Army** - Bosnia, Kosovo, Iraq, Saudi Arabia
- **US Army** - Bosnia, Kosovo, Iraq, Afghanistan
- **KBR** - Kuwait, Nigeria, Hungary
- **Exxon** - Chad
- **Leighton Construction** - Abu Dhabi
- **Other Projects** - Kazakhstan, Estonia, Jamaica

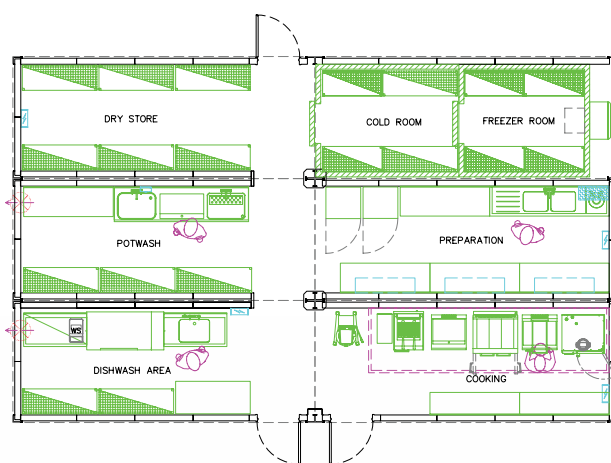
## CONSTRUCTION FEATURES

- 20ft ISO module
- Internal and external steel linings
- Steel construction
- Flat pack transport option
- EU compliant electrical and Lighting systems
- 60mm to 100mm wall panel thickness
- Delivery from 6 weeks

## STANDARD FEATURES

- Stainless steel exhaust systems
- Fire suppression system
- Gas or electric equipment
- Foodsafe wall finishes
- Safety flooring
- Air conditioning

## TW600 Kitchen



12.11 X 7.35 metres

## PERFORMANCE CRITERIA

- The MK TW600 Kitchen is capable of producing up to 2,000 meals per day depending on cooking equipment and menu.
- Constructed within 6 weeks from order, the facility can be erected within days.
- Standard design format shown, MK can adapt to suit clients own requirements.

## MK DESIGN AND BUILD

- MK can provide facilities ex works or supply complete on site construction and project management.
- All facilities are designed by MK in house design engineers, so that each scheme is bespoke to client requirements.
- On receipt of order, full construction drawings are prepared to assist client siteworks.

**All projects are planned and delivered according to ISO9001, ISO14001 and OHSAS 18001 accreditation**